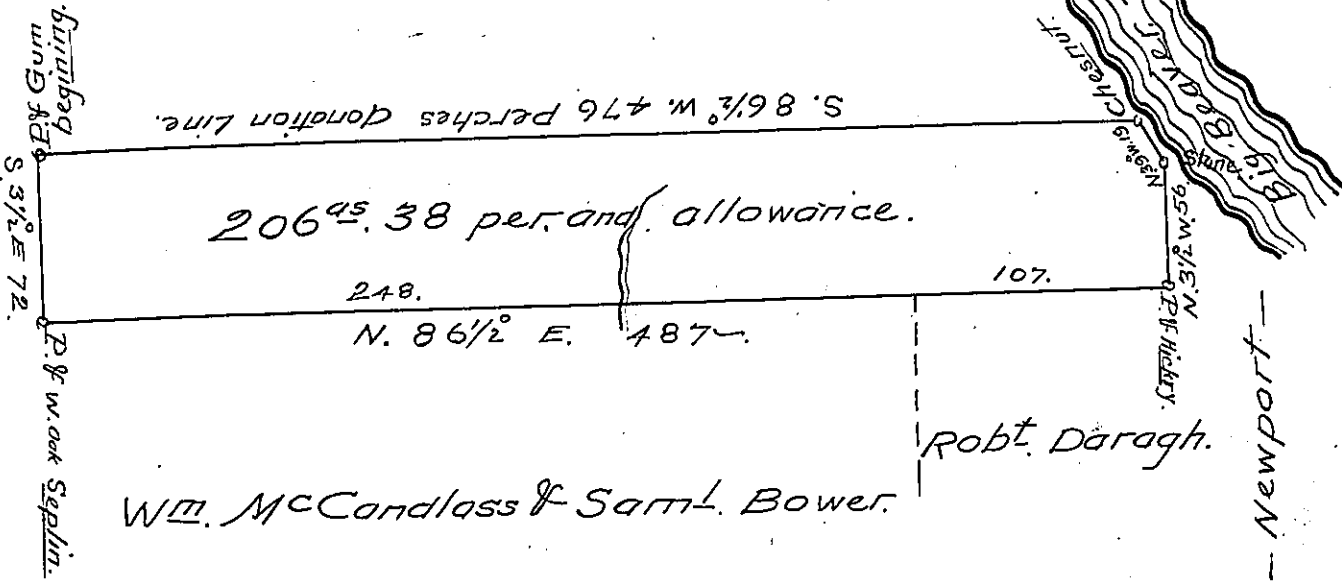




Andrew Jenkins.



John Clerk.

Wm. McCandless & Saml. Bower.

Robt. Daragh.

Newport

The above represents a survey made the 19<sup>th</sup> day of June Anno Domini 1834 in pursuance of an actual settlement and improvement at the request of Andrew Jenkins adjoining lines with said Jenkins on the north, on the west John Clerk on the south Wm. McCandless Saml. Bower & Robt. Daragh on the East - Newport and Beaver Creek situate in Big Beaver township Beaver County containing two hundred and six ac - thirty eight per. &c.

Jacob Spangler Esq.  
 Surveyor General - Pa.

John Bryan D.S.

Actl. Settle & Impt. of Easter Bower.

IN TESTIMONY that the above is a copy of the original remaining on file in the Department of Internal Affairs of Pennsylvania, made conformably to an Act of Assembly approved the 16th day of February, 1833, I have hereunto set my Hand and caused the Seal of said Department to be affixed at Harrisburg, this fifth day of June 1905.

*Geo. D. Brown*  
 Secretary of Internal Affairs.